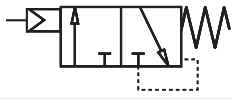




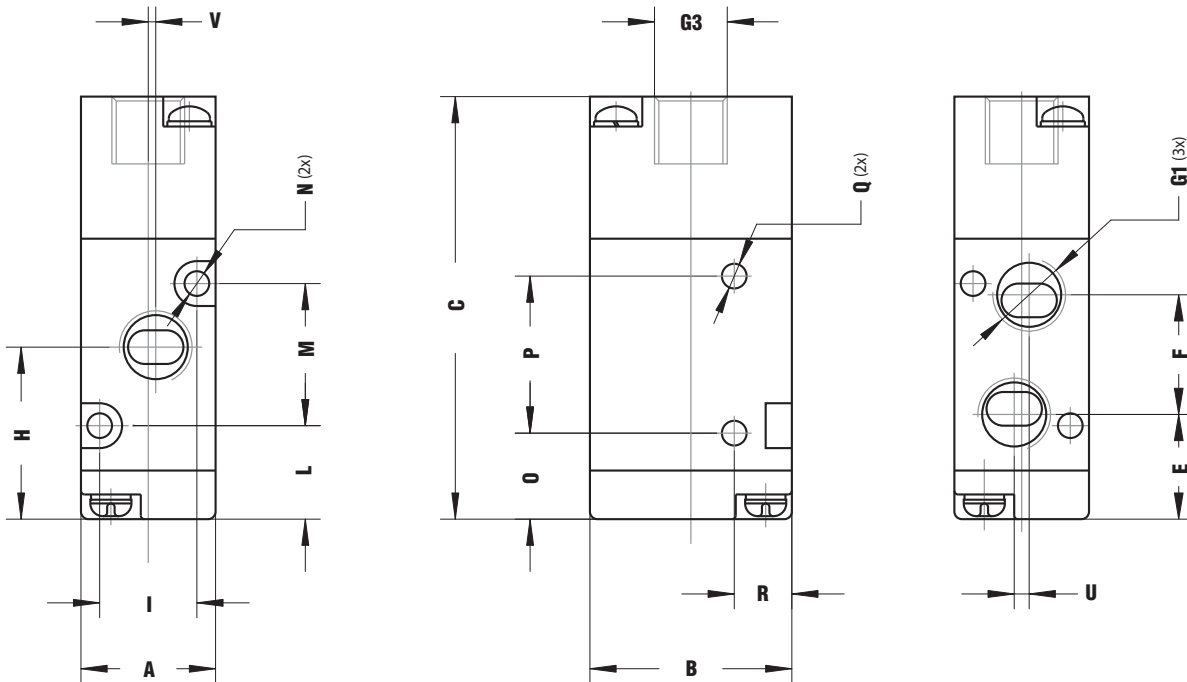
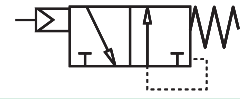
3/2 normalmente chiusa
normally closed

VP◇◇N



3/2 normalmente aperta
normally open

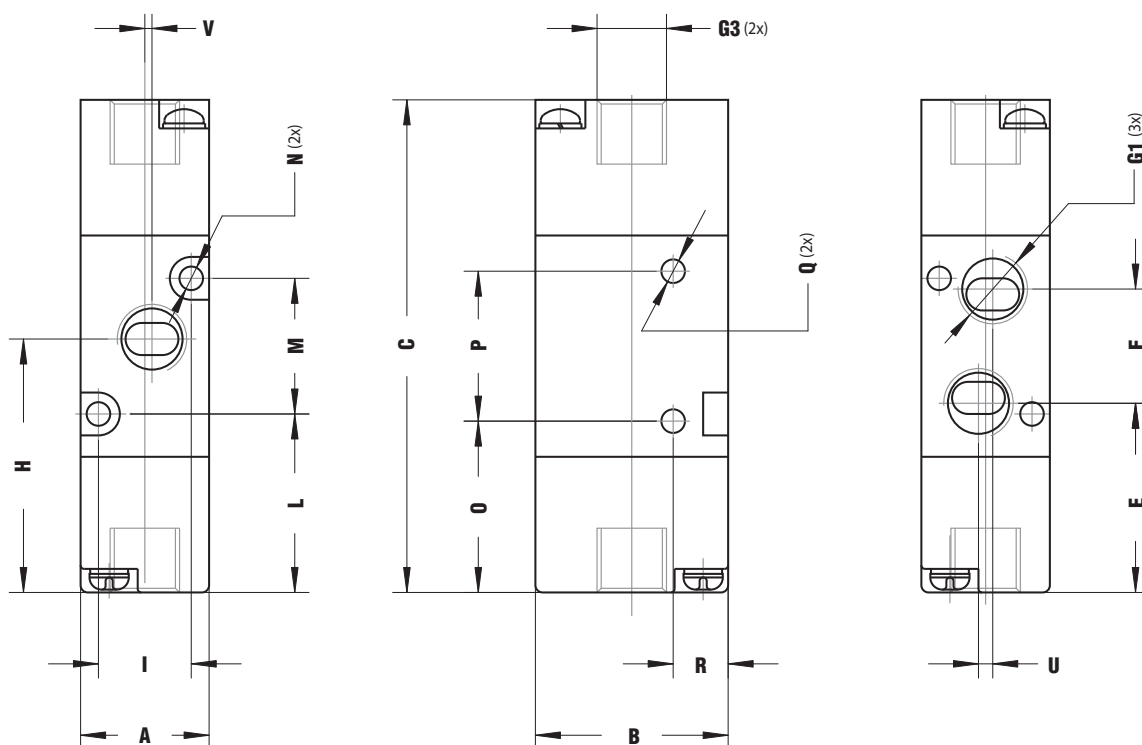
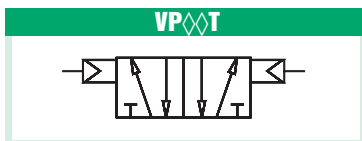
VP◇◇O



Codice Code		Flusso Flow (l/min)	A	B	C	E	F	G1	G3	H	I	L	M	N	O	P	Q	R	U	V	Peso Weight (g)
VPS80	VPS8N	450	18	27	56,5	14	16	G 1/8"	G 1/8"	23	13	12,5	19	3,3	11,5	21	3,3	7,7	2	1	70
VPM80	VPM8N	750	22	35	70	16	22,5	G 1/8"	G 1/8"	29	17	12,5	30	3,2	15	25	4,3	8	-	-	130
VPM40	VPM4N	750	22	35	70	16	22,5	G 1/4"	G 1/8"	29	17	12,5	30	3,2	15	25	4,3	8	-	1,5	125
VPL40	VPL4N	1100	27	40	80,5	20,5	24	G 1/4"	G 1/8"	32,5	20	15	35	4,3	17,5	30	4,3	10,5	-	-	210
VPL30	VPL3N	1100	27	40	80,5	20,5	24	G 3/8"	G 1/8"	32,5	20	15	35	4,3	17,5	30	4,3	10,5	-	2	205



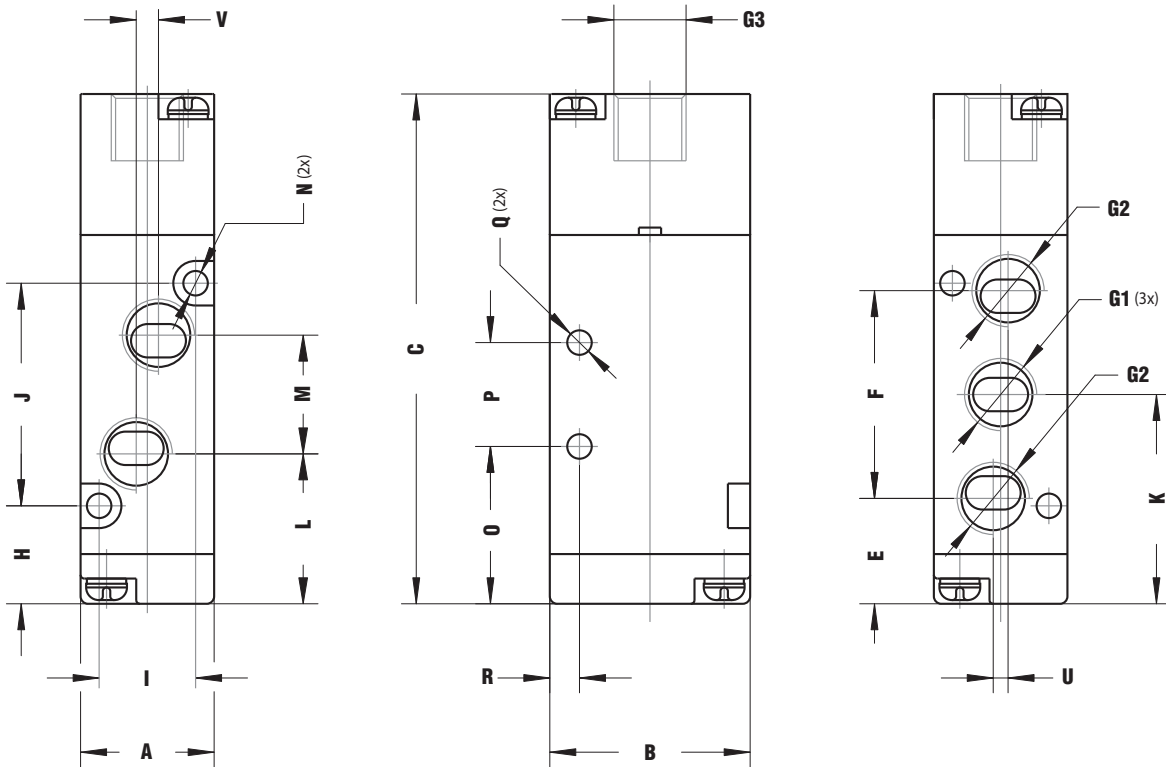
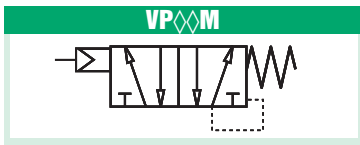
3/2 bistabile
bistabile



Codice Code	Flusso Flow (l/min)	A	B	C	E	F	G1	G3	H	I	L	M	N	O	P	Q	R	U	V	Peso Weight (g)
VPS8T	450	18	27	69	26,5	16,0	G 1/8"	G 1/8"	35,5	13	25,0	19	3,3	24,0	21	3,3	7,7	2	1	75
VPM8T	750	22	35	84	30,5	22,5	G 1/8"	G 1/8"	42,0	17	26,0	30	3,2	29,5	25	4,3	8,0	-	-	145
VPM4T	750	22	35	84	30,5	22,5	G 1/4"	G 1/8"	43,0	17	27,0	30	3,2	29,5	25	4,3	8,0	-	1,5	140
VPL4T	1100	27	40	96	36,0	24,0	G 1/4"	G 1/8"	48,0	20	30,5	35	4,3	33,0	30	4,3	10,5	-	-	230
VPL3T	1100	27	40	96	36,0	24,0	G 3/8"	G 1/8"	48,0	20	30,5	35	4,3	33,0	30	4,3	10,5	-	-	225



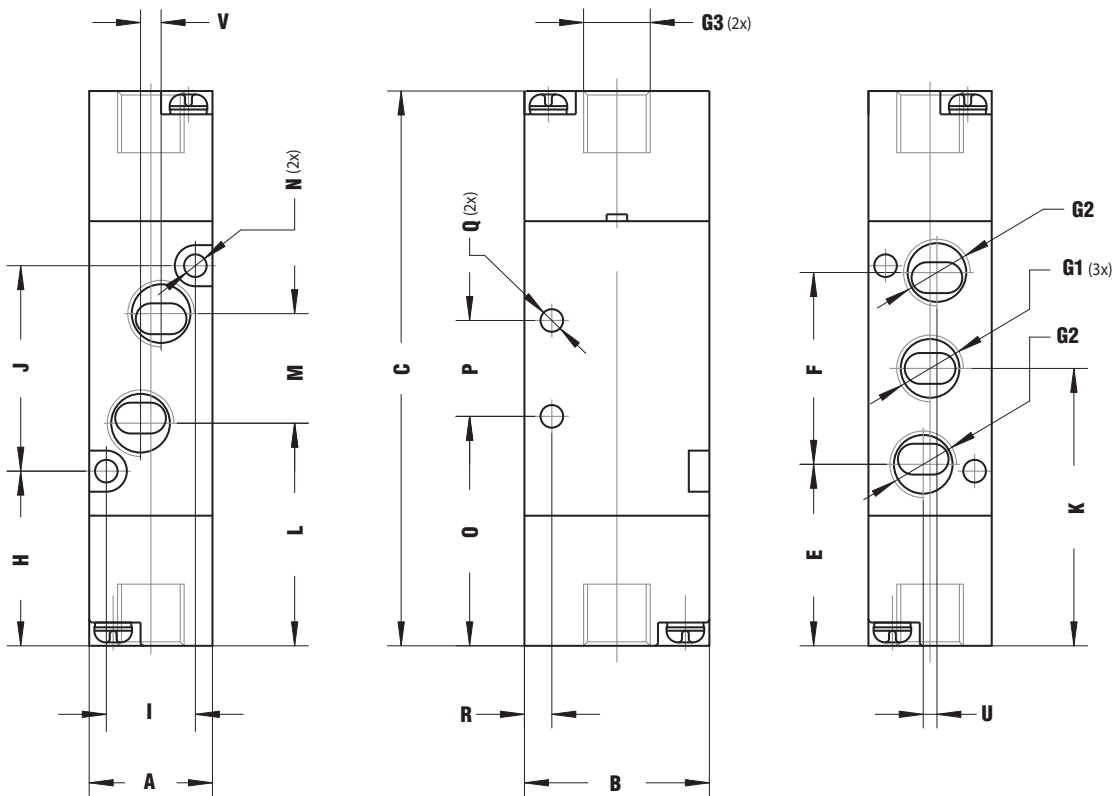
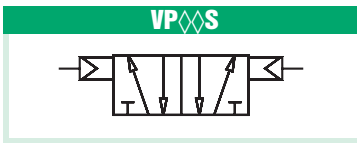
5/2 monostabile
monostabile



Codice Code	Flusso Flow (lt/min)	A	B	C	E	F	G1	G2	G3	H	I	J	K	L	M	N	O	P	Q	R	U	V	Peso Weight (g)
VPS8M	500	18	27	68,7	14,2	28	G 1/8"	G 1/8"	G 1/8"	13,2	13	30	28,2	20,2	16	3,3	21,2	14	3,3	4,0	2	-	120
VPM8M	600	22	35	77,7	13,7	36	G 1/8"	G 1/8"	G 1/8"	12,7	17	38	31,7	22,7	18	3,2	21,7	20	4,3	7,0	-	-	220
VPM4M	750	22	35	77,7	13,7	36	G 1/4"	G 1/8"	G 1/8"	12,7	17	38	31,7	21,2	21	3,2	21,7	20	4,3	7,0	-	3	220
VPL4M	900	27	40	95,5	17,5	45	G 1/4"	G 1/4"	G 1/8"	15,0	20	50	40,0	29,0	22	4,3	28,0	24	4,3	6,5	-	-	310
VPL3M	1100	27	40	95,5	17,5	45	G 3/8"	G 1/4"	G 1/8"	15,0	20	50	40,0	28,0	24	4,3	28,0	24	4,3	6,5	-	4	310
VPX2M	2250	34	50	167,9	25,5	63	G 1/2"	G 1/2"	G 1/8"	21,0	27	72	57,0	39,0	36	4,3	43,0	28	5,5	7,5	-	4	590

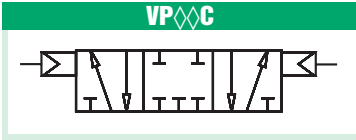


5/2 bistabile
bistabile

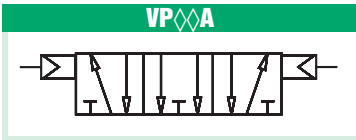


Codice Code	Flusso Flow (l/min)	A	B	C	E	F	G1	G2	G3	H	I	J	K	L	M	N	O	P	Q	R	U	V	Peso Weight (g)
VPS8S	500	18	27	81	26,5	28	G 1/8"	G 1/8"	G 1/8"	25,5		30	40,5	32,5	16	3,3	33,5	14	3,3	4,0	2	3	175
VPM8S	600	22	35	92	28,0	36	G 1/8"	G 1/8"	G 1/8"	27,0	17	38	46,0	37,0	18	3,2	36,0	20	4,3	7,0	-	-	320
VPM4S	750	22	35	92	28,0	36	G 1/4"	G 1/8"	G 1/8"	27,0	17	38	46,0	35,5	21	3,2	36,0	20	4,3	7,0	-	3	320
VPL4S	900	27	40	111	33,0	45	G 1/4"	G 1/4"	G 1/8"	30,5	20	50	55,5	44,5	22	4,3	43,5	24	4,3	6,5	-	-	400
VPL3S	1100	27	40	111	33,0	45	G 3/8"	G 1/4"	G 1/8"	30,5	20	50	55,5	43,5	24	4,3	43,5	24	4,3	6,5	-	4	400
VPX2S	2250	34	50	142	39,5	63	G 1/2"	G 1/2"	G 1/8"	35,0	27	72	71,0	53,0	36	4,3	57,0	28	5,5	7,5	-	4	770

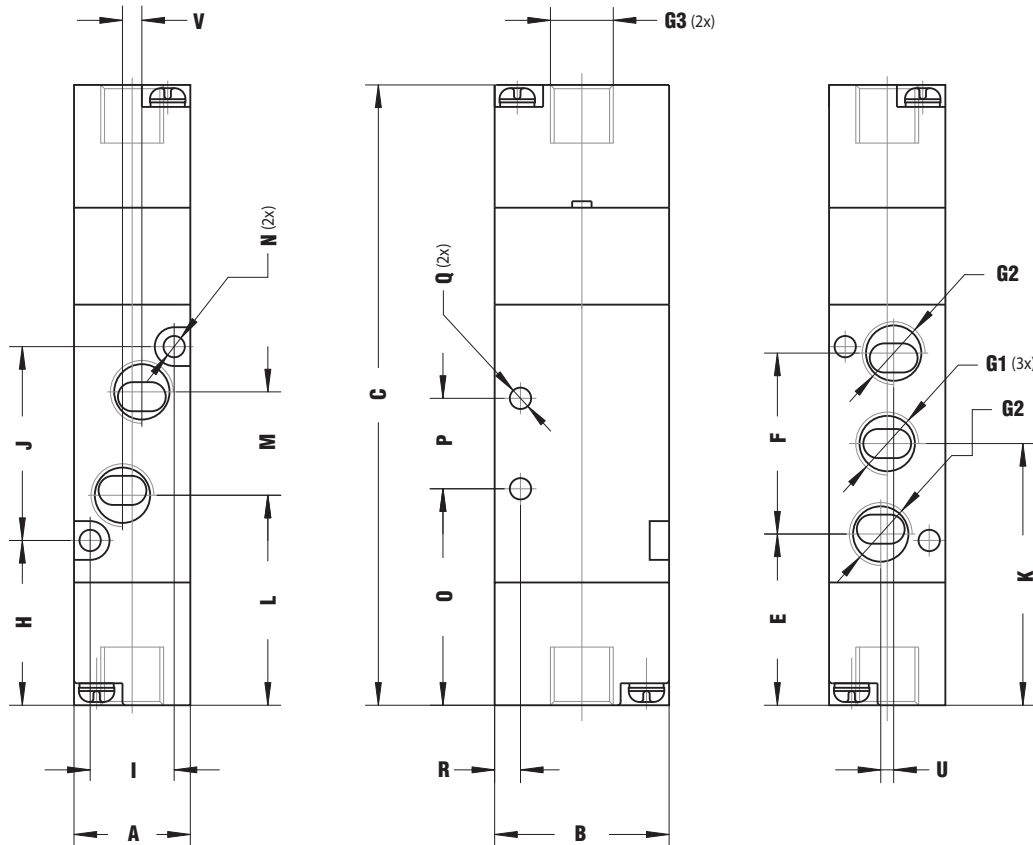
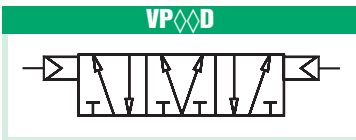
5/3 centri chiusi
closed center



5/3 centri aperti
open center



5/3 centri in pressione
pressured center



Codice Code			Flusso Flow (lt/min)	A	B	C	E	F	G1	G2	G3	H	I	J	K	L	M	N	O	P	Q	R	U	V	Peso Weight (g)
VPS8C	VPS8A	VPS8D	400	18	27	96	26,5	28	G 1/8"	G 1/8"	G 1/8"	25,5		30	40,5	32,5	16	3,3	33,5	14	3,3	4,0	2	3	200
VPM8C	VPM8A	VPM8D	500	22	35	111	28,0	36	G 1/8"	G 1/8"	G 1/8"	27,0	17	38	46,0	37,0	18	3,2	56,0	20	4,3	7,0	-	-	400
VPM4C	VPM4A	VPM4D	500	22	35	111	28,0	36	G 1/4"	G 1/8"	G 1/8"	27,0	17	38	46,0	35,5	21	3,2	56,0	20	4,3	7,0	-	3	400
VPL4C	VPL4A	VPL4D	840	27	40	130	33,0	45	G 1/4"	G 1/4"	G 1/8"	30,5	20	50	55,5	44,5	22	4,3	43,5	24	4,3	6,5	-	-	540
VPL3C	VPL3A	VPL3D	840	27	40	130	33,0	45	G 3/8"	G 1/4"	G 1/8"	30,5	20	50	55,5	43,5	24	4,3	43,5	24	4,3	6,5	-	4	540
VPX2C	VPX2A	VPX2D	1100	34	50	163	39,5	63	G 1/2"	G 1/2"	G 1/8"	35,0	27	72	71,0	53,0	36	4,3	57,0	28	5,5	7,5	-	4	770