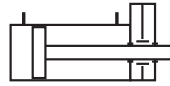


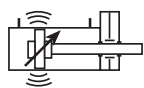
**Stelo semplice**



**Simple rod cylinder**

Acciaio C40 cromato	<b>S</b>	C40 steel chrome-plated
Inox AISI 303 cromato	<b>C</b>	AISI 303 chrome-plated
Inox AISI 303	<b>X</b>	Stainless Steel AISI 303

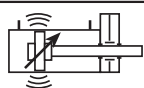
**Tubo di alluminio con 4 tiranti**  
Aluminium tube with 4 tie-rods



**"HEAVY"**  
**BTM**

**"HEAVY"**  
**CTM**

**Profilo di alluminio senza tiranti**  
Aluminium profile without tie-rods



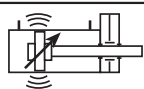
**"LIGHT"**  
**BLM**

**"HEAVY"**  
**BHM**

**"LIGHT"**  
**CLM**

**"HEAVY"**  
**CHM**

**Profilo di alluminio pulito**  
Aluminium clean profile



**"LIGHT"**  
**BPM**

**"HEAVY"**  
**BRM**

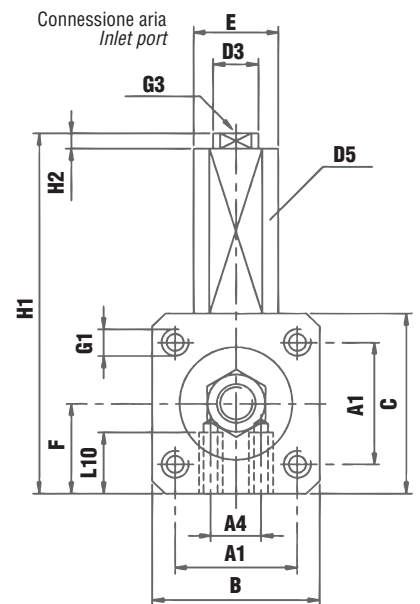
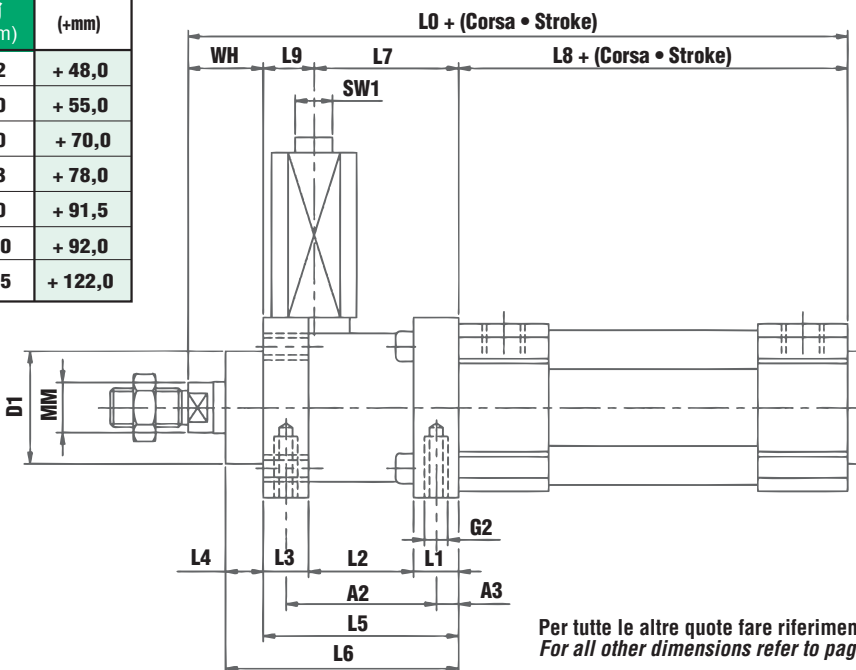
**"LIGHT"**  
**CPM**

**"HEAVY"**  
**CRM**



**QUOTA STELO  
EXTRA PISTON ROD**

Ø (mm)	(+mm)
32	+ 48,0
40	+ 55,0
50	+ 70,0
63	+ 78,0
80	+ 91,5
100	+ 92,0
125	+ 122,0

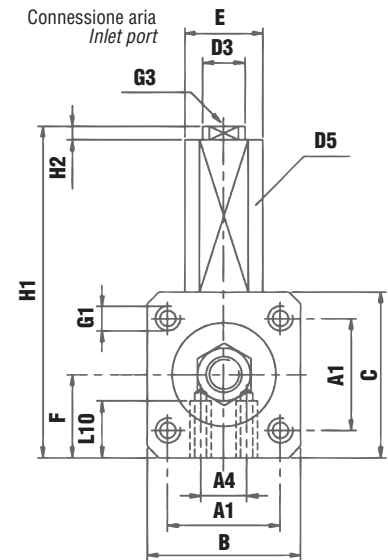
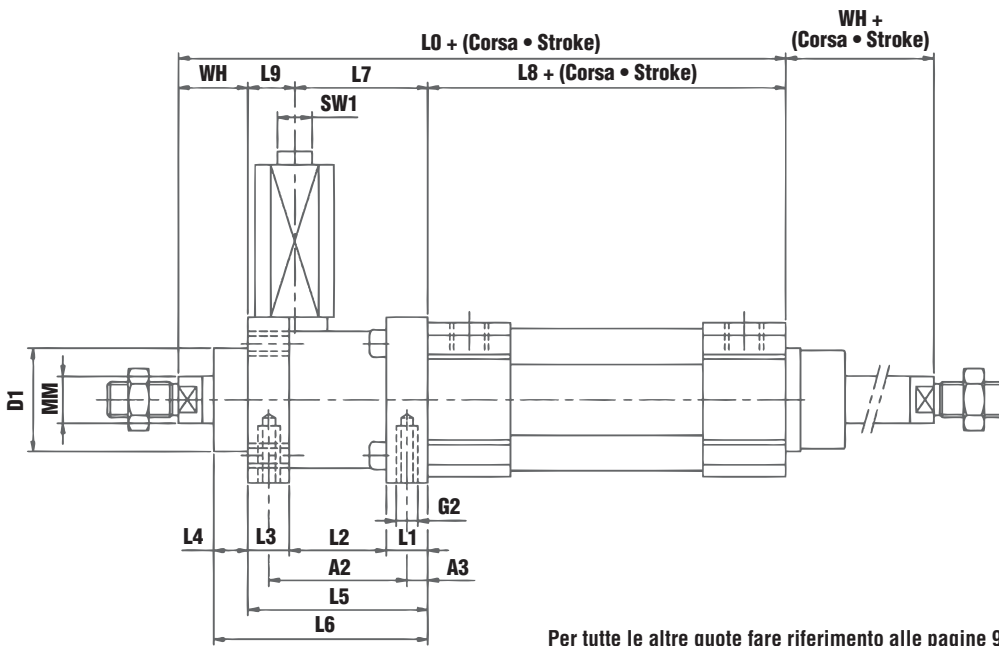


Per tutte le altre quote fare riferimento alle pagine 6, 7, 8 e 18.  
For all other dimensions refer to pages 6, 7, 8 and 18.

Codice Code	Ø (mm)	L0 + (Corsa • Stroke)																		Connessione aria Inlet port										Peso • Weight			
		L0	L1	L2	L3	L4	L5	L6	L7	L8	L9	L10	A1	A2	A3	A4	B	C	D1	D3	D5	E	F	G1	G2	G3	H1	H2	MM	SW1	WH	0 mm (g)	1 mm (g/mm)
◇◇◇032◇	32	168.0	8	28	12.0	10.0	48.0	58	32.0	94	16.0	8	32.5	40	4.2	16	48	50	30	10	27.5	22.7	25.0	M6	M5	M5	96.0	4	12	8	26	780	2.26
◇◇◇040◇	40	190.0	10	33	12.0	10.0	55.0	65	35.5	105	19.5	10	38.0	46	4.5	21	56	58	35	10	31.5	27.7	29.0	M6	M5	M5	102.0	4	16	8	30	1160	3.20
◇◇◇050◇	50	213.0	15	39	16.0	12.0	70.0	82	49.0	106	21.0	12	46.5	54	11.5	24	68	70	40	15	36.0	32.7	35.0	M8	M6	1/8" G	127.0	4	20	13	37	2000	4.66
◇◇◇063◇	63	236.0	15	47	16.0	12.0	78.0	90	49.0	121	29.0	16	56.5	60	9.5	32	82	85	45	15	44.0	41.0	42.5	M8	M6	1/8" G	151.5	4	20	13	37	3000	5.10
◇◇◇080◇	80	265.5	16	58	17.5	18.5	91.5	110	62.0	128	29.5	16	72.0	70	10.0	44	100	105	45	19	53.0	49.7	52.5	M10	M8	1/8" G	181.5	4	25	17	46	5370	7.45
◇◇◇100◇	100	281.0	16	58	18.0	23.0	92.0	115	65.0	138	27.0	16	89.0	70	10.0	60	120	130	55	19	58.0	54.7	65.0	M10	M8	1/8" G	207.0	4	25	17	51	8300	8.70
<b>BHM</b> <b>BTM</b> 125◇	125	347.0	25	70	27.0	32.0	122.0	154	85.0	160	37.0	20	110.0	95	11.0	75	140	150	60	19	67.5	64.9	75.0	M12	M10	1/8" G	227.0	4	32	17	65	12400	13.40

Stelo semplice		Simple rod cylinder
Acciaio C40 cromato	<b>P</b>	C40 steel chrome-plated
Inox AISI 303 cromato	<b>R</b>	AISI 303 chrome-plated
Inox AISI 303	<b>W</b>	Stainless Steel AISI 303

<b>Tubo di alluminio con 4 tiranti</b> <i>Aluminium tube with 4 tie-rods</i>	<b>"HEAVY"</b> <b>BTM</b>	<b>"HEAVY"</b> <b>CTM</b>
<b>Profilo di alluminio senza tiranti</b> <i>Aluminium profile without tie-rods</i>	<b>"LIGHT"</b> <b>BLM</b>	<b>"HEAVY"</b> <b>BHM</b>
		<b>"LIGHT"</b> <b>CLM</b>
		<b>"HEAVY"</b> <b>CHM</b>
<b>Profilo di alluminio pulito</b> <i>Aluminium clean profile</i>	<b>"LIGHT"</b> <b>BPM</b>	<b>"HEAVY"</b> <b>BRM</b>
		<b>"LIGHT"</b> <b>CPM</b>
		<b>"HEAVY"</b> <b>CRM</b>



Per tutte le altre quote fare riferimento alle pagine 9 e 18.  
For all other dimensions refer to pages 9 and 18.

Codice Code	Ø (mm)	L0	L1	L2	L3	L4	L5	L6	L7	L8	L9	L10	A1	A2	A3	A4	B	C	D1 Ø	D3 Ø	D5 Ø	E □	F	G1	G2	G3	H1	H2	MM Ø	SW1	WH	Peso • Weight	
		0 mm (g)	1 mm (g/mm)																														
◇◇◇032◇	32	168.0	8	28	12.0	10.0	48.0	58	32.0	94	16.0	8	32.5	40	4.2	16	48	50	30	10	27.5	22.7	25.0	M6	M5	M5	96.0	4	12	8	26	790	3.20
◇◇◇040◇	40	190.0	10	33	12.0	10.0	55.0	65	35.5	105	19.5	10	38.0	46	4.5	21	56	58	35	10	31.5	27.7	29.0	M6	M5	M5	102.0	4	16	8	30	1200	4.80
◇◇◇050◇	50	213.0	15	39	16.0	12.0	70.0	82	49.0	106	21.0	12	46.5	54	11.5	24	68	70	40	15	36.0	32.7	35.0	M8	M6	1/8" G	127.0	4	20	13	37	2050	7.20
◇◇◇063◇	63	236.0	15	47	16.0	12.0	78.0	90	49.0	121	29.0	16	56.5	60	9.5	32	82	85	45	15	44.0	41.0	42.5	M8	M6	1/8" G	151.5	4	20	13	37	3100	7.50
◇◇◇080◇	80	265.5	16	58	17.5	18.5	91.5	110	62.0	128	29.5	16	72.0	70	10.0	44	100	105	45	19	53.0	49.7	52.5	M10	M8	1/8" G	181.5	4	25	17	46	5430	11.40
◇◇◇100◇	100	281.0	16	58	18.0	23.0	92.0	115	65.0	138	27.0	16	89.0	70	10.0	60	120	130	55	19	58.0	54.7	65.0	M10	M8	1/8" G	207.0	4	25	17	51	8400	12.60
<b>BHM</b> <b>BTM</b> 125◇	125	347.0	25	70	27.0	32.0	122.0	154	85.0	160	37.0	20	110.0	95	11.0	75	140	150	60	19	67.5	64.9	75.0	M12	M10	1/8" G	227.0	4	32	17	65	13200	19.80

